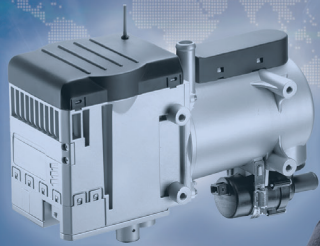








HYDRONIC M-II



- TRUCK SYSTEMS 
- RAILWAY SYSTEMS 
- OFFHIGHWAY SYSTEMS 
- BUS SYSTEMS 
- MARINE SYSTEMS 
- AUTOMOTIVE SYSTEMS 

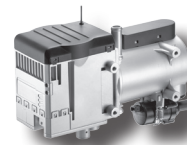
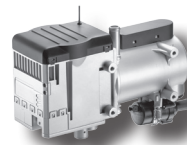
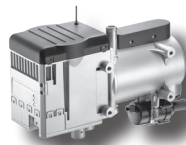
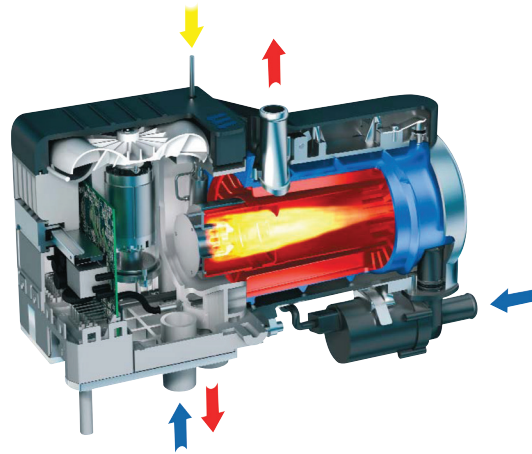


HYDRONIC M-II

Eberspaecher's Hydronic M-II series is powerful, compact, lightweight, and rugged in design. This makes this series of heaters the ideal solution for providing engine, fuel, and hydraulic preheat for off-highway equipment as well as engine and supplemental cabin heat for motorcoachs, school buses, and boats. The Hydronic M-II series of heaters is available in one size with the option of four power levels and are diesel or bio-diesel compatible. Units can be boxed for protection against the elements and incorporate an automatic altitude compensation component, so you can use your heater anywhere with ease.

FEATURES AND BENEFITS OF THE HYDRONIC M-II

- Output control in small increments
- Ceramic glow pin
- Electrically commuted motors for combustion air, fan, and water pump
- Heater can be mounted in different positions and angles for installation flexibility
- Biodiesel-compatible (Hydronic M-II 8 unit only) up to 100%
- EPA verified and CARB compliant for use anywhere in North America
- Automatic altitude compensation



TECHNICAL DATA		Hydronic M-II 8	Hydronic M-II 10	Hydronic M-II 12
Heat Output (kW/BTU)	High	8.0 / 27300	9.5 / 32437	12 / 42000
	Low	1.5 / 5120	1.5 / 5120	1.2 / 4100
Fuel Consumption (L/hr/Gal/hr)	High	0.9 / 0.24	1.2 / 0.32	1.5 / 0.40
	Low	0.18 / 0.05	0.18 / 0.05	0.15 / 0.04
Power Consumption at 12V (amps)	High	4.6	7.2	11
	Low	2.9	2.9	2.8
Weight (kg/lbs)			6.2 / 13.7	